

Shepherd of the Valley Preschool Newsletter: AUGUST & SEPTEMBER

This year's bible verse:

*I can do all things through him
who gives me strength.*
Philippians 4:13



Welcome to Preschool!

We have been busy getting the classrooms ready and are looking forward to a wonderful year with your children!

Home Visits

Your child's teacher will contact you to set up a time to meet your child in the comfort of their home to get familiar with their teacher before school begins.

*At school visit is also an option.

Church Service & Open House

Sunday, August 18: 9:30am Church Service

10:45am Open House

You are welcome to come to our church service before Open House where our staff will be prayed for and recognized!

After church come meet our staff, find your child's classroom, try your brightwheel app, practice using the bathroom, find your cubby, have a snack and meet some friends!

First Regular Days of School

MWF & M-F Students - Monday, August 19

8:45am-11:45am or 8:45am-2:45pm

T/TH Students - Tuesday, August 20

8:45am-11:45am or 8:45am-2:45pm



Monthly Newsletters

Monthly newsletters will be placed in your child's cubby (and also sent by email) at the beginning of each month.

Please make sure you receive the email copy so you know you are receiving emails from the office. If you have an update to your email address please make it in brightwheel as soon as possible.



School Holiday

Monday, September 2nd - Labor Day



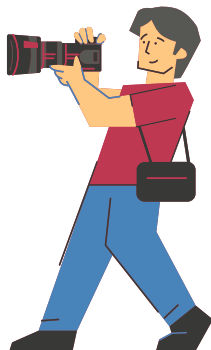
There will be no school this day!



SOTV Clothing

Each child will be given an SOTV shirt to wear on Field Trips and as they would like during the school year. Additional shirts and sweatshirts are available for purchase in the office (based on availability).

T-Shirts - \$10 Sweatshirts - \$15



Fall Portraits

September 19th and 20th

Our Photographer will be here to photograph your child. More information will be in your child's cubby.

Fire, Earthquake & Lockdown Drills

We will be talking to our students and practicing our procedures in case of an emergency monthly.

This is a great time to also talk to your child about the plan in your home!



Locked Doors

Please note that as a safety and precautionary measure, we keep the preschool doors locked between the hours of 9:15am-11:30am and 12pm-2:30pm. If you are late in the morning, or need to pick your child up early, you must come to the office so that we may unlock the doors for you.

Your child's safety is our priority!




Sign-In Procedure

1. Park in the large parking lot in the back and hold your child's hand as you walk through the gate.
2. Put all of your child's belongings in their cubby and help them wash their hands.
3. Sign your child **IN** on brightwheel on the iPad by your child's classroom door.
4. Say goodbye at the classroom door.

Sign-Out Procedure

1. Gather your child's belongings from their cubby.
2. Sign your child **OUT** on brightwheel on the iPad by your child's classroom door.
3. Meet in the gym outside of your child's classroom door and wait for your child to be dismissed.



Email

Password

Sign In

[Cannot access your account?](#)

BEFORE AND AFTER SCHOOL PROGRAMS

Breakfast Bunch: 8am-8:45am, Monday – Friday

SOTV offers a before school program for all students. The cost is \$2 for every 15 minutes and you will be billed through brightwheel at the end of the month.

Please meet in the gym if you are coming to school early to play!

Extended Classes: 8:45am-2:45pm, Monday – Friday

SOTV offers a daily extended program for all students. If you're interested in signing up for the program, please contact the office.

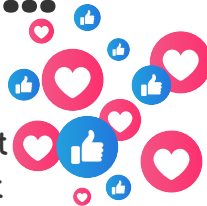
Drop-ins may also be available; however, space is limited. Please check with the office or email Tania to check on availability.



Where to find...

brightwheel

- Check in student
- Set up recurring tuition payment
- Keep contact information current



Instagram: @ShepherdoftheValleyPreschool

Facebook: @ShepherdoftheValleyPreschool

- Follow our pages!
- See photos of student activities
- Find event reminders

www.shepherdofthevalleypreschool.org

- All Newsletters, updated monthly
- All Snack Menus, updated monthly
- Updated event reminders
- Enrollment and School Information



Almaden Academy of Music: Fun Fridays

AAM is delighted to offer its popular Music for Little Ones class ONSITE from 11:45am-12:20pm on Friday afternoons with Miss Ginger. We'll read and write music, explore a different orchestral instrument every week and display LOTS of cool instruments. Open to Mrs. Quast, Mrs. P and Miss Morrella's classes. Half or full day students welcome. \$24/class or less with full semester payment. Register onsite@SOTV at www.almadenacademyofmusic.com. Space is limited.



Playground Policy

We strive to make our preschool a safe place to learn and play. To keep your children safe; our playground is only open during preschool hours when our trained staff is able to supervise and maintain the safety of the children. We encourage you to set up play dates at a nearby park if your child would like to continue to play after school with their classmates. We are thankful for the wonderful families at SOTV and the safety of your precious children is our priority.



Gymsters

We are excited for another year at SOTV! Gymsters is a fun and innovative additional PE class on Monday's. The class includes three fun motor developing activities.

Monday's 11:45-12:25 – Movement Class
12:25-12:35 – Lunch time

After class, children go back to their room to finish up rest time or are picked up by their parents at 12:35.

Gymsters is a year around, on-going program. We break up the payments throughout the year on a seven-week cycle.

- Seven Session Cycles Run: Aug. 26 through May 12
- Cost: \$101.50 for 7 sessions (billed every 7 weeks).
- Register: www.Gymsterspe.com
(Choose Shepherd of the Valley and register.)
- Payments: Venmo @Gymsters

Students can join our program any time, we can always pro-rate. Space is limited.

If you decide you want to cancel Gymsters after you sign up, you can email us at: Gymsters22@gmail.com



Snack Menu - August & September

Please note: Water and 1% milk will be served. We do not serve juice. All crackers, cereal and pasta will be whole wheat, if available. Please talk to your child's teacher to make accommodations if your child has food allergies.

Monday	Tuesday	Wednesday	Thursday	Friday
19 Teddy Grahams & Milk	20 Ritz Crackers Cheese & Water	21 Goldfish Crackers Apples & Water	22 Popcorn Cuties & Water	23 Yogurt Bananas & Water
26 Pita Crackers Carrots & Water	27 Wheat Thins Raisins & Water	28 Rice Rollers Pears & Water	29 Cheerios & Milk	30 Cucumbers Pretzels & Water
2 NO SCHOOL	3 Apples String Cheese & Water	4 Cantaloupe Crackers & Water	5 Nutri-Grain Bar & Milk	6 Wheat Bagel Cream Cheese & Milk
9 Veggie Straws Cuties & Water	10 Nutri-Grain Bar & Milk	11 Pretzels Cucumbers & Water	12 Crackers Watermelon & Water	13 Apples String Cheese & Water
16 Granola Bar & Milk	17 Wheat Crackers Carrots & Water	18 Chex Squares Berries & Water	19 Popcorn Raisins & Water	20 Cheese Slices Crackers & Water
23 Graham Crackers & Milk	24 Cheese Its Apples & Water	25 Rice Rollers Mixed Fruit & Water	26 Yogurt Bananas & Water	27 Apple Sauce Crackers & Water
30 Veggie Straws Cuties & Water				